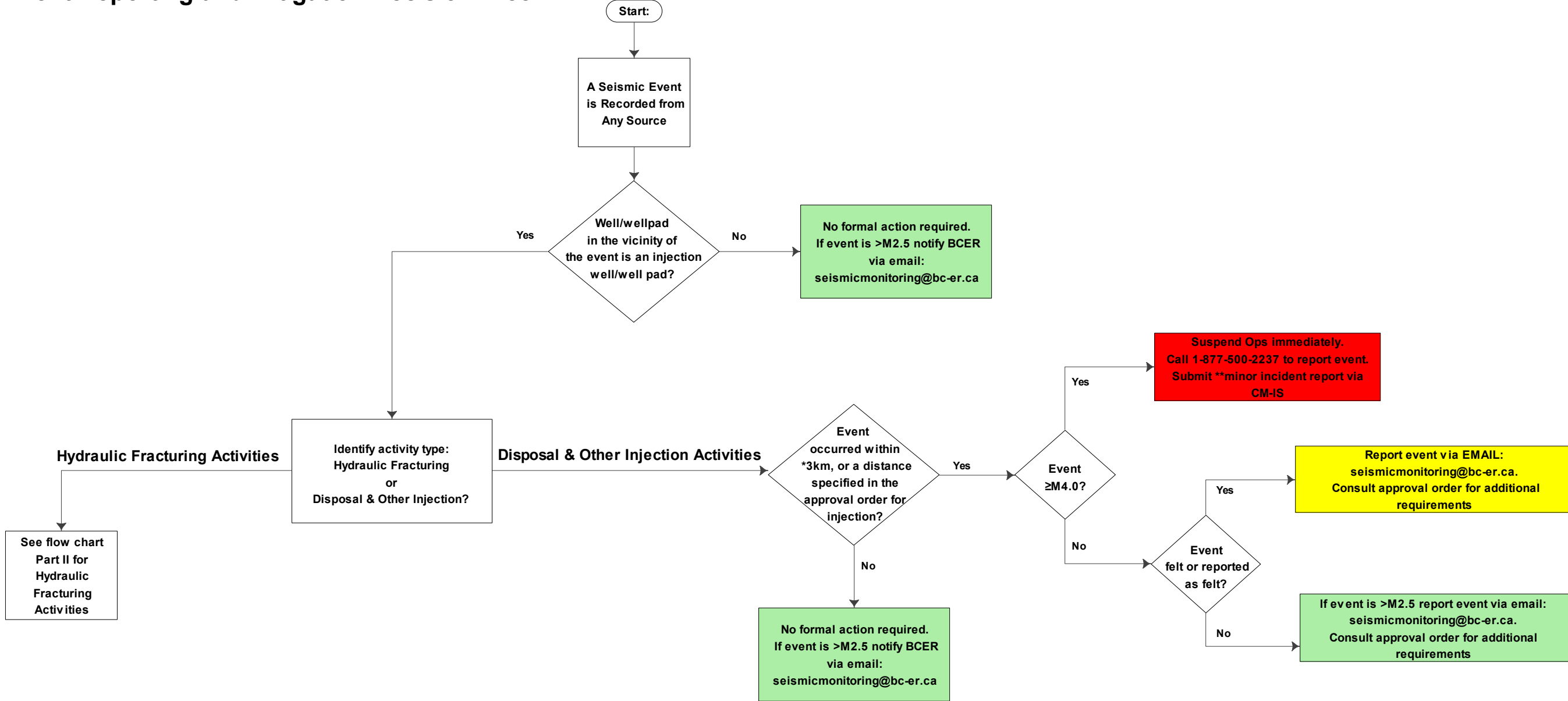


# Seismic Event Reporting and Mitigation Decision Tree



**NOTE:**  
 \*Distance to event:  
 Vertical Well: Radius measured from the wellhead  
 Deviated/HZ Well: Radius measured from the well trajectory  
 Note: Must take into account the error ellipse of the event location

**NOTE:**  
 \*\*All events ≥4.0 are considered minor incidents but may be elevated to a level 1 or higher if damage is discovered or reported on or off the lease