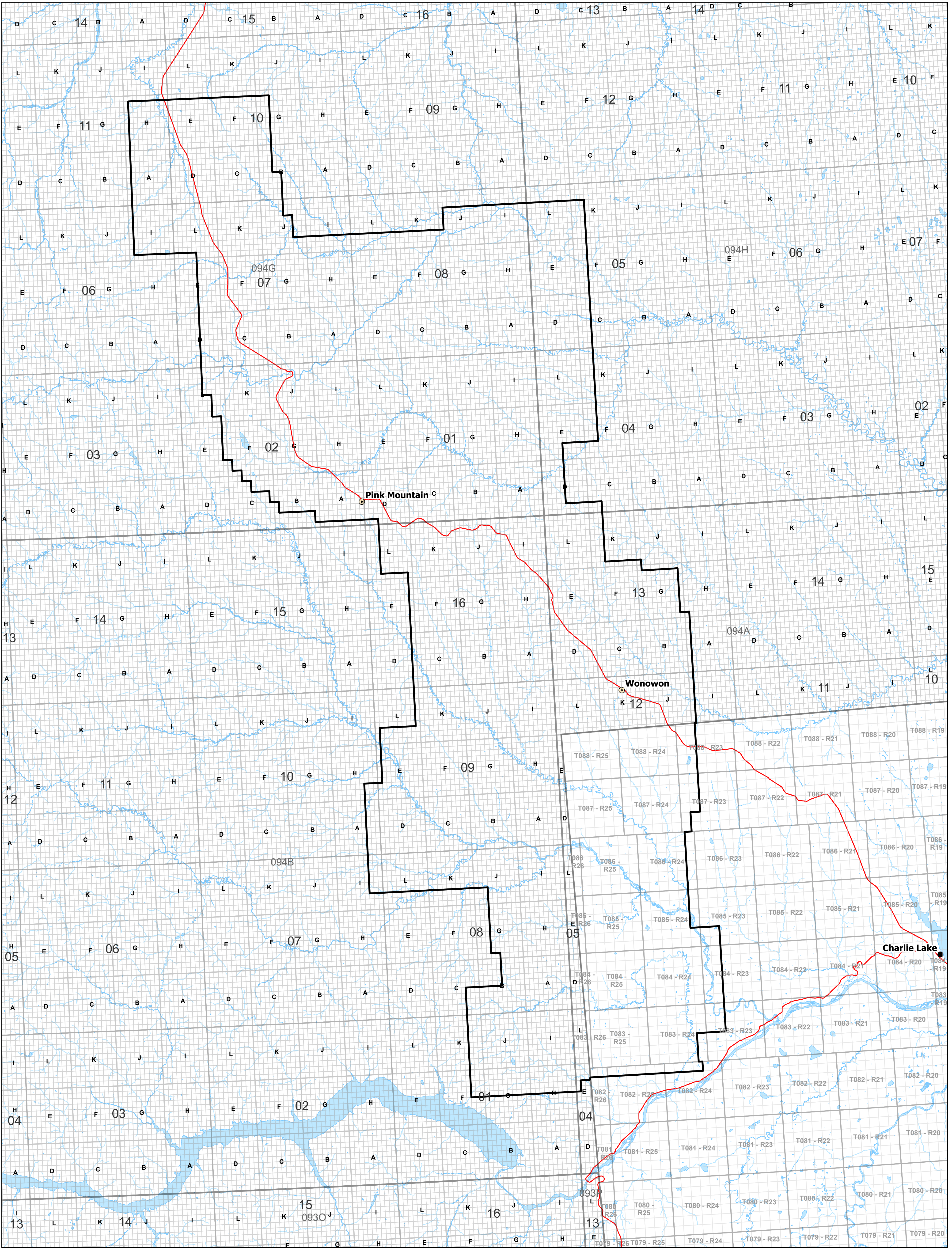


North Montney Seismic Monitoring and Mitigation Area (NMSMMA) Special Project Order



Legend

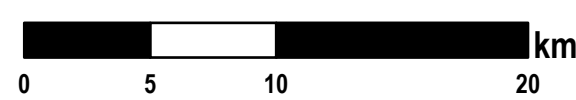
- North Montney Seismic Monitoring and Mitigation Area
- Highway & Arterial Roads



Map is for representation purposes only. The BC Energy Regulator assumes neither responsibility for inconsistencies or inaccuracies in the data nor liability for any damages of any type arising from errors or omissions.

We acknowledge and respect the many First Nations, each with unique cultures, languages, legal traditions and relationships to the land and water, on whose territories the British Columbia Energy Regulator's work spans.

Scale: 1:300,000



Coordinate System: NAD 1983 BC Environment Albers
Date Exported: 2024-12-02

